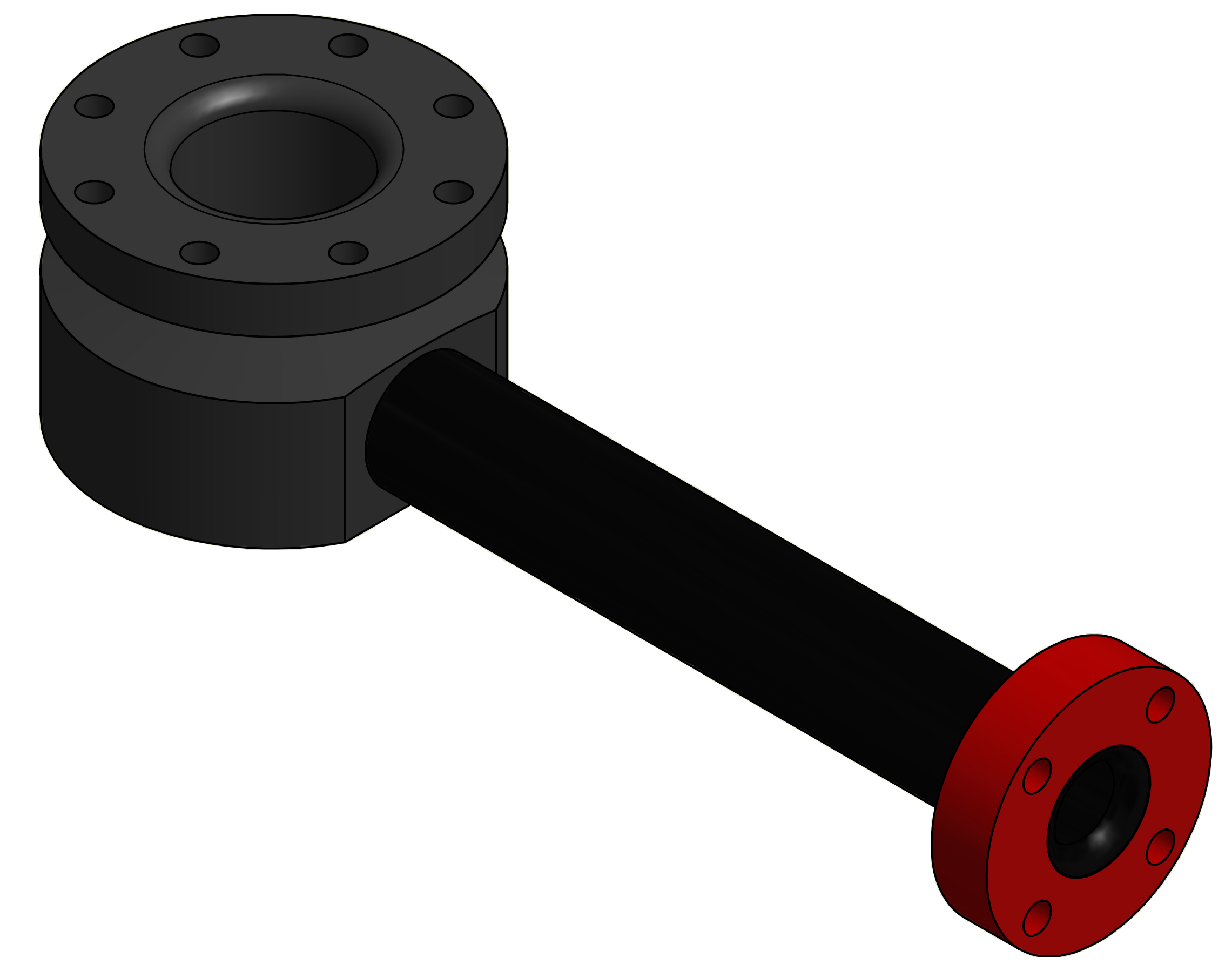
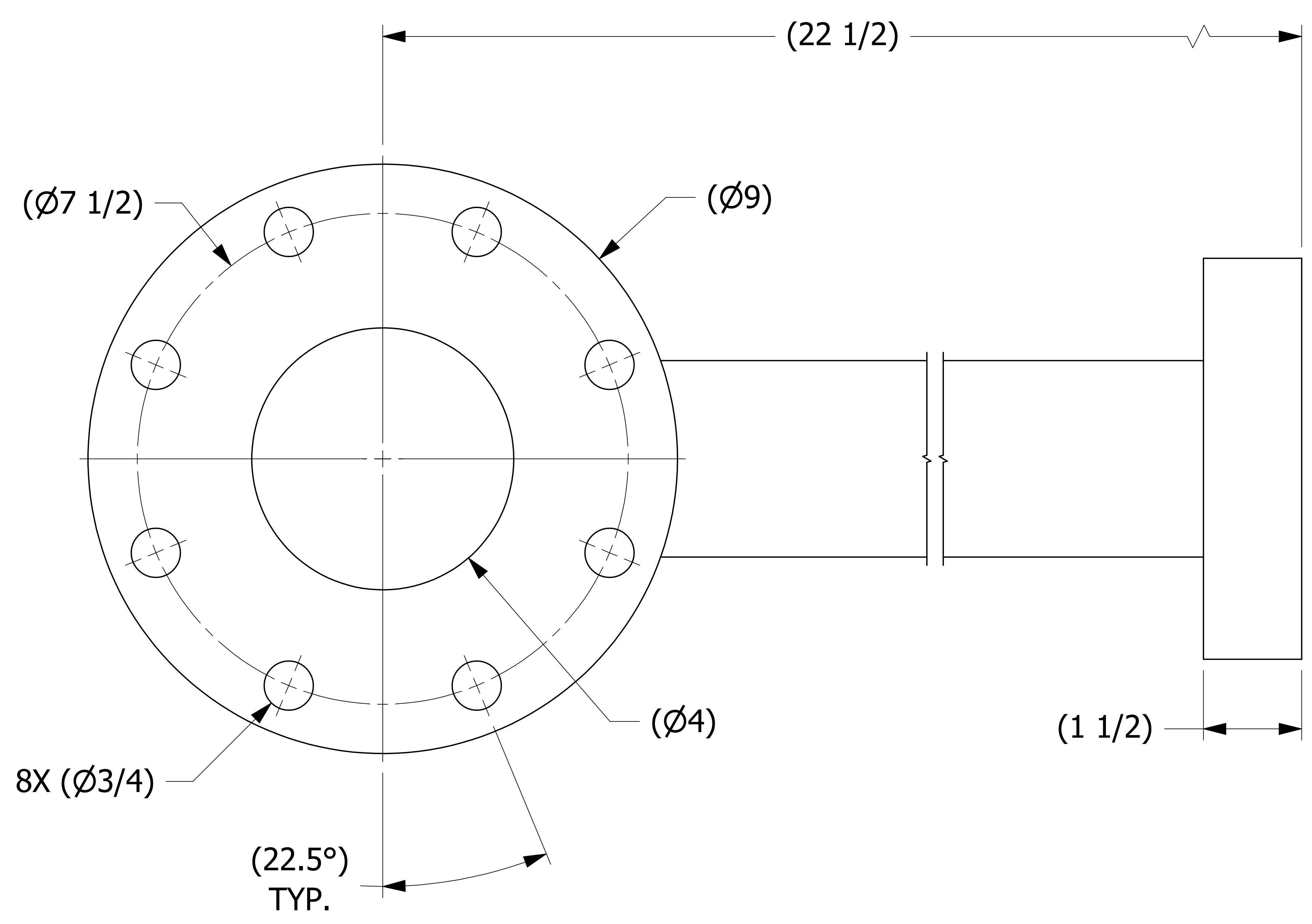
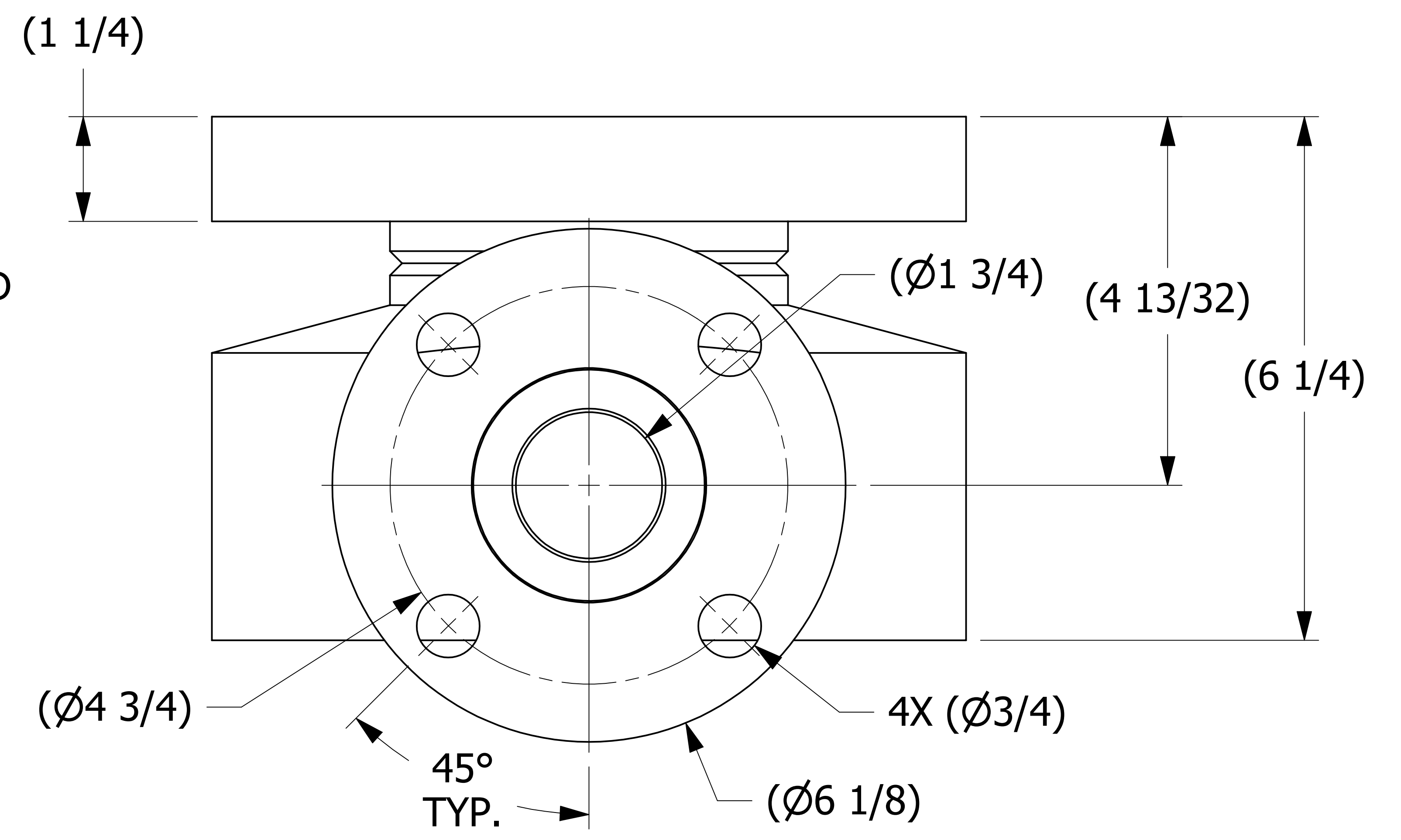
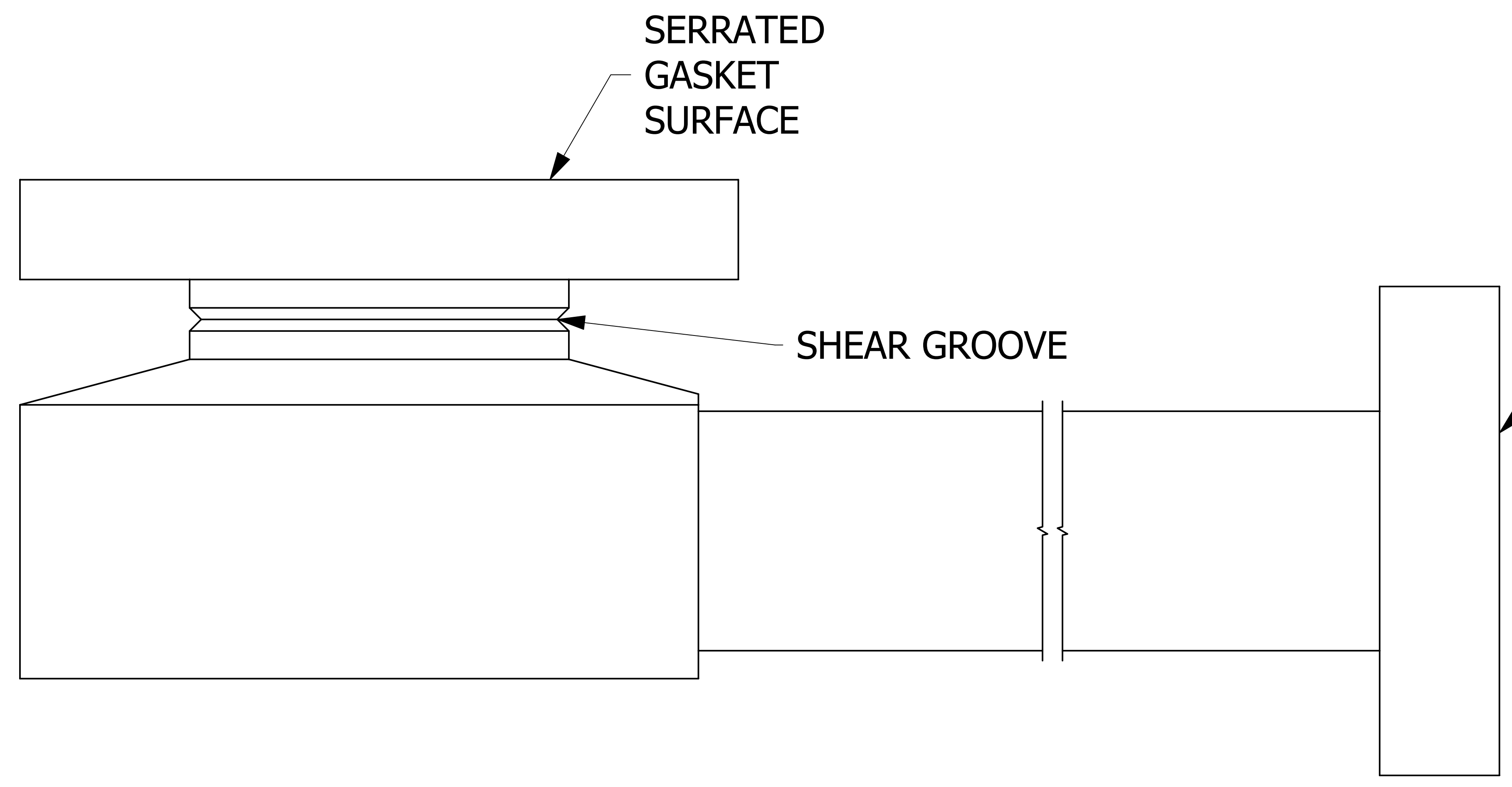


SALES DRAWING SALES DRAWING

SALES DRAWING SALES DRAWING



ISOMETRIC VIEW



SERRATED GASKET SURFACE

B	JG	2-25-16	REPLACED B40783 W/ B43318; UPDATED HS4X2X90PEB3SG, NOTES
A	JG	2-4-15	RELEASED FOR PRODUCTION
REV	BY	DATE	DESCRIPTION

UNLESS OTHERWISE SPECIFIED DIMENSIONAL TOLERANCES FRACTIONAL: $\pm 1/16$ X.XX: $\pm .03$ X.XXX: $\pm .015$ ANGULAR: $\pm 1^\circ$ DEBURR ALL SHARP EDGES. ALL MACHINED SURFACES TO HAVE A 125 RMS FINISH UNLESS NOTED OTHERWISE.	DRAWN BY: JG
	CHECKED BY: CHL
	PROTOTYPE BY: JG
	PROTOTYPE DATE: 1/30/2015
	APPROVED FOR PRODUCTION BY: CHL
THIRD ANGLE PROJECTION	PRODUCTION DATE: 2/4/2015

SALCO PRODUCTS, INC.			
PART NAME: PIPE ELBOW 4"X2"X90°			
MATERIAL: SALCO PE			
PROJECT #: H150130	SHEET #: 1 OF 1	SCALE: 1:1	
DRAWING #: E40782	PART #: HS4X2X90PE9SG		

THIS PRINT, PROPERTY OF SALCO PRODUCTS INC. CONTAINS PROPRIETARY INFORMATION AND MUST NOT BE COPIED, REPRODUCED, OR USED DETRIMENTALLY TO OUR INTEREST.